

Introducing the ACI

Our Portfolios

Projects at a glance – 2016/17

About the ACI



ACI NSW Agency
for Clinical
Innovation

**Collaboration.
Innovation.
Better Healthcare.**

The ACI works with clinicians, consumers and managers to design and promote better healthcare for NSW.

Who we are and what we do



**Service Redesign
and Evaluation**



**Implementation
Support**



**Specialist Advice on
Healthcare Innovation**



**Knowledge
Sharing**



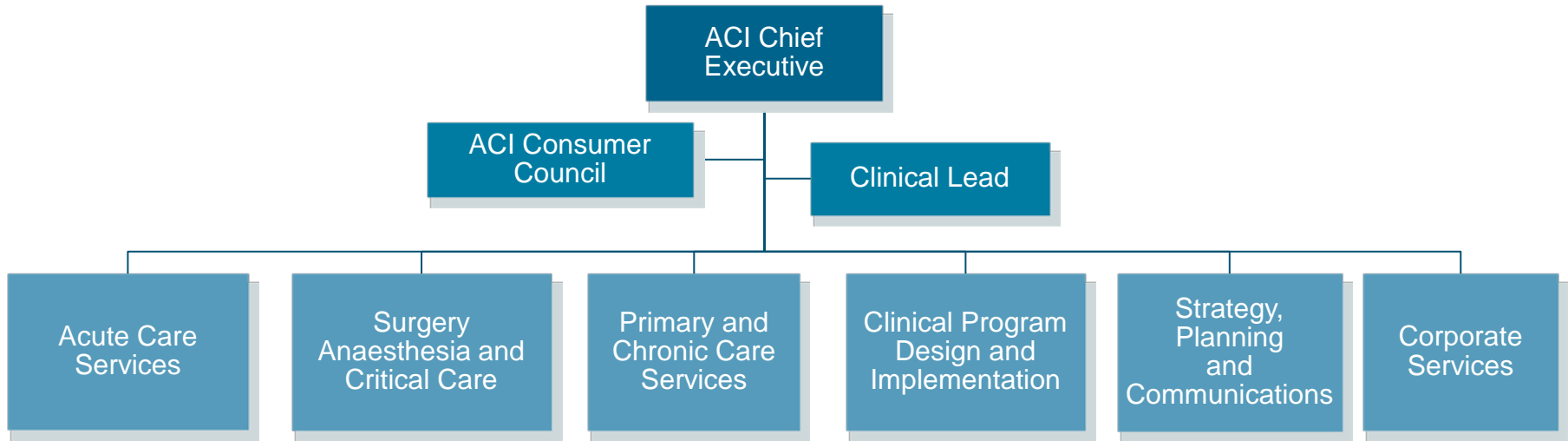
**Initiatives including
Guidelines & Models of Care**



**Continuous Capability
Building**



Our Structure



Our Clinical Portfolios

Our clinical portfolios provide support to ACI Clinical Networks, Taskforces and Institutes and promote collaboration, two way communication and information sharing. This unique structure encourages people to work together across and within portfolios to design and promote better healthcare, whatever the care setting.



Acute Care



Surgery, Anaesthesia and Critical Care



Primary and Chronic Care

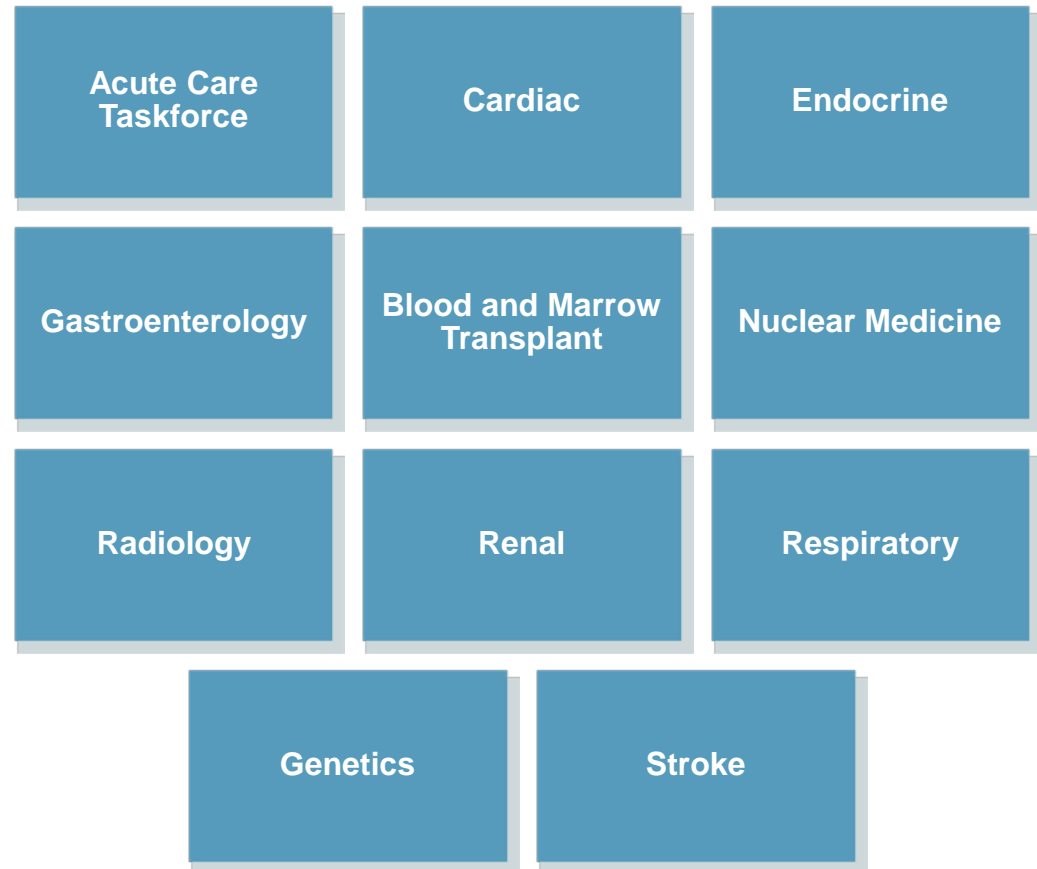


Clinical Program Design and Implementation

Acute Care



Daniel Comerford
Director of Acute Care



Projects underway 2016/17

Development



Patient in the community

Patient enters the hospital

ED or Direct Admission

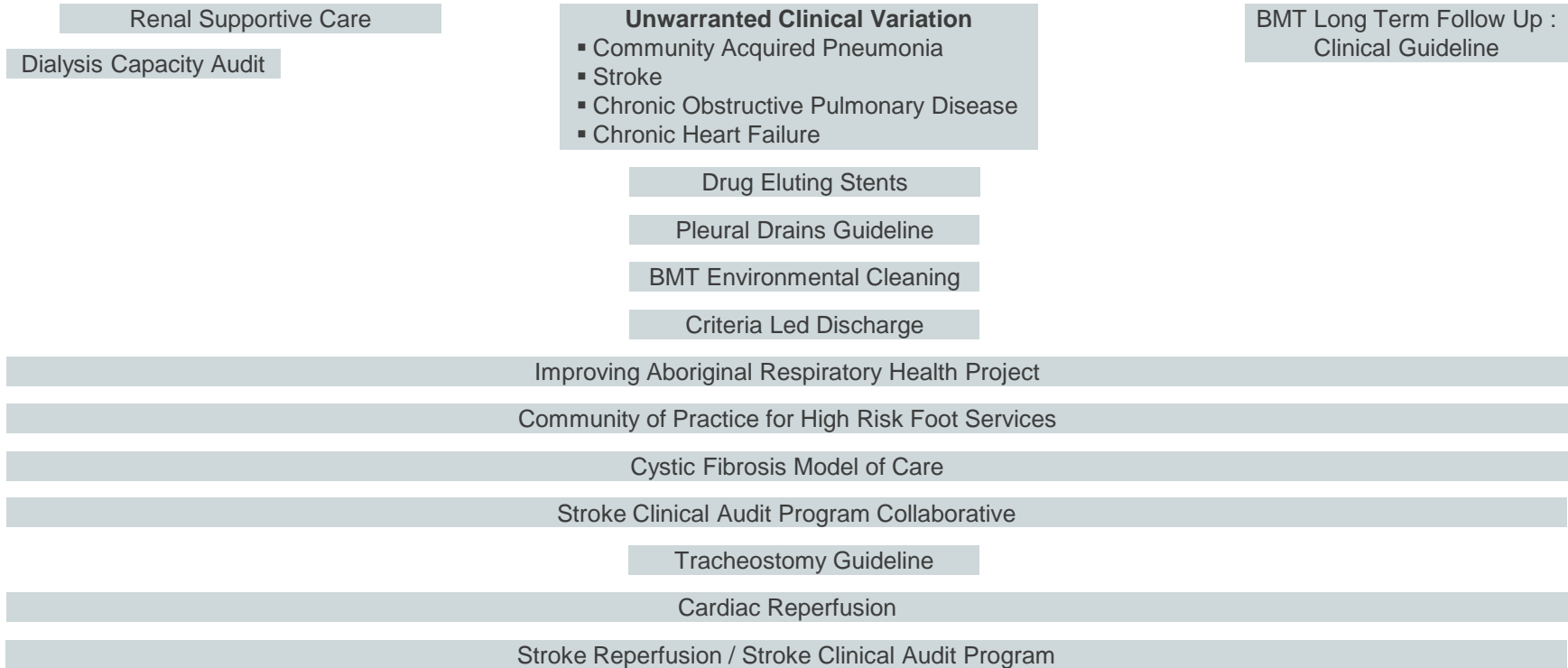
Inpatient or Outpatient*

Patient exits the hospital

Patient in the community

Rehabilitation

Implementation



*includes HITH and ambulatory care

Surgery Anaesthesia and Critical Care



Professor Donald MacLellan

Director Surgery,
Anaesthesia & Critical Care

Anaesthesia
and
Perioperative
Care

Burn Injury
Service

Critical Care
Taskforce

Emergency
Care Institute

Gynaecological
Oncology

Intensive Care
Services

Intensive Care
Coordination
and Monitoring
Unit

Institute of
Trauma and
Injury
Management

Ophthalmology

Rural Critical
Care Taskforce

Surgical
Services
Taskforce

Urology



Projects underway 2016/17

Development

Gynaecology Referral Path – Enhancing Patient Specialist Referrals

Prostate Cancer Registry – NSW to National

Community Eye Project (Diabetic Retinopathy, Glaucoma and Cataracts)

Trauma Patient Outcome – Review across NSW

Trauma on line Education Modules

Rural Adult Emergency Clinical Guidelines review

Nurse Administered Thrombolysis (Cardiac Reperfusion) – Rural and Regional NSW

NSQIP

Telehealth / medicine project for rural and regional burns patients

Patient in the community

Patient enters the hospital

ED or Direct Admission

Inpatient or Outpatient*

Patient exits the hospital

Patient in the community

Rehabilitation

Implementation

Prostate Cancer – CLICC Study (NHMRC with SAX Institute)

Community Eye Care (C-EYE-C) project (Diabetic Retinopathy, Glaucoma and Cataract)

Pre Procedure Toolkit Review

Nurse Delegated Emergency Care Protocols / Airway Registry / Physiotherapist Role in ED project

Operating Theatre Efficiency Implementation Project

ICU Service Model Implementation

Minimum Standards for Safe Sedation – Implementation Project

Minimum Standards for the Management of Fractured Hip in the Older Patient

Prostate Cancer – Clinical Nurse Consultant in Outpatients Clinics: A value study

Tracheostomy Guideline

Trauma App

ICCIS project – Clinician Engagement

*includes HITH and ambulatory care

Primary and Chronic Care



Regina Osten

A/Director Primary Care &
Chronic Services

Aged Health	Brain Injury	Chronic Care	Chronic Care for Aboriginal People
Drug and Alcohol	GP Advisory Group	Intellectual Disability	Mental Health
Musculoskeletal	Nutrition	Pain	Palliative Care
Rehabilitation	Risk Stratification	Spinal Injury	Transition Care



Projects underway 2016/17

Development

- Cognitive Remediation
- Patient-Centred Medical Home Consumer Enablement Framework
- Risk Stratification for Integrated Care Strategy
- Strategic Framework of Health Services for People with Intellectual Disability in NSW
- Transition Care Principles
- Spinal Cord Injury Model of Care
- Minimum Standards for the Care of Amputees
- Nutrition-related outcomes for adults with hip fracture
- NSW Brain Injury Rehabilitation Program model of case management and tools
- Health Literacy for Aboriginal people
- Model of Rehabilitation for People with Traumatic Brain Injury
- Guidelines for Day Rehabilitation Model of Care
- Individual Patient Specials
- Neurovascular Observation Chart
- Rheumatic Heart Disease (RHD) Framework

Patient in the community

Patient enters the hospital

ED or Direct Admission

Inpatient or Outpatient*

Patient exits the hospital

Patient in the community

Rehabilitation

Implementation

- NSW Paediatric Rheumatology Network
- Osteoarthritis Chronic Care Program
- Model of Care of Acute Low Back Pain
- Strengthening Healthcare in the Community Tool
- Care of Confused Hospitalised Older Persons Program
- Nutrition Standards and Diet Specifications
- One Deadly Step
- Vocational Intervention Program for People with Traumatic Brain Injury Accessing BIRP Services
- Tier 3 and 2 Pain Services
- Neurodegenerative and Neuromuscular conditions
- 48 Hour Follow Up – Chronic Care for Aboriginal People
- Rehabilitation Model of Care
- A Clinician's Guide: Caring for people with Gastrostomy tubes and devices
- Model of Care for the Prevention and Integrated Management of Pressure Injuries in People with a Spinal Cord Injury or Spina Bifida
- Osteoporotic Re-fracture Prevention
- Framework Integrating Care for Older People with Complex Health Needs
- Chronic Disease Rehabilitation Framework
- Palliative and End of Life Care – A Blueprint for Improvement

*includes HITH and ambulatory care

Clinical Program Design and Implementation



Chris Shipway

A/Director Clinical Program
Design & Implementation

Model of Care
Development and
Implementation
Support

Centre For
Healthcare
Redesign

Health Economics
and Evaluation

Knowledge
Management

Patient
Experience and
Consumer
Engagement

Unwarranted
Clinical Variation
Taskforce

Research

Sustainable
Access
Committee

Tele-health

Patient Reported
Measures

Rural Health
Network



ACI NSW Agency
for Clinical
Innovation

Projects underway 2016/17

Development

- Capability Development Program for Patient Reported Measures
- Multiple economic and evaluation analyses to as part of Model of Care development and implementation
- Overseeing a number of projects aimed at addressing unwarranted clinical variation
- Support for Improvement capability development through Surgery Redesign Training Program
- Support for capability development to develop solutions through Redesign Program (Diploma Program/GEM)
- Clinical Innovation Program
- Specialist Geriatric Outreach
- Service Access Co-ordination Centres
- Guidelines for the Use of Telehealth for Clinical and Non-clinical Usage in NSW
- Build a Capability Program for Co-Design, including commencing development of five co-design projects
- Specialist Outpatient Services Framework**
- Offer system to capture real time feedback from patients, families, carers and staff

Patient in the community

Patient enters the hospital

ED or Direct Admission

Inpatient or Outpatient*

Patient exits the hospital

Patient in the community

Rehabilitation

Implementation

- Annual Rural Innovations Changing Healthcare (RICH) Forum
- HealthPathways - Evaluation
- Capability development through AIM, GEM, Coaching Panel/Redesign Leaders Network
- Knowledge Management – Innovation Exchange
- Research on implementation of change in large complex systems
- Capability development for Implementation (Building Partnerships, ICU Level 4)
- Music and Memory in 21 sites across NSW health facilities***
- Multi Purpose Service Model of Care

**includes HITH and ambulatory care*

*** in collaboration with Ministry of Health*

**** in collaboration with Arts Health Institute*

Excellence and Innovation in Healthcare Portal

Keep up-to-date on health care improvement initiatives being undertaken by ACI and the Clinical Excellence Commission.



Find more than 100 different initiatives.
Use the advanced filter function to
refine your search.



Learn more about the benefits of work
underway across the NSW health system.



Contact the Initiative Lead
to find out more.



Compatible with mobile phones,
smart phones and tablet devices.

Easier Access. Better health care services.

www.eih.health.nsw.gov.au



ACI NSW Agency
for Clinical
Innovation

Level 4, Sage Building
67 Albert Avenue, Chatswood NSW 2067

PO Box 699
Chatswood NSW 2057

T + 61 2 9464 4666
F + 61 2 9464 4728

aci-info@health.nsw.gov.au
www.aci.health.nsw.gov.au

Thank you

www.aci.health.nsw.gov.au



**Collaboration.
Innovation.
Better Healthcare.**