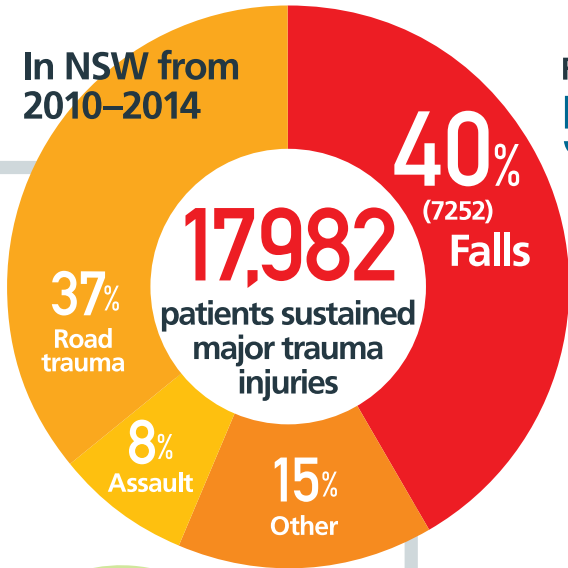


# FALLS RESULTING IN MAJOR TRAUMA

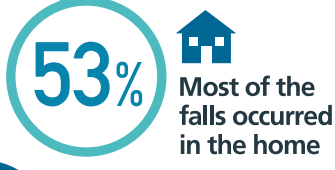
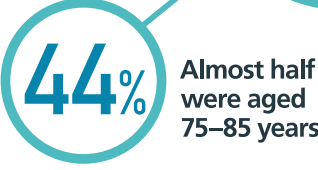
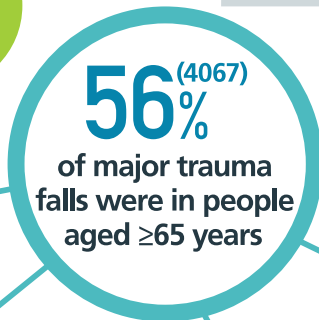
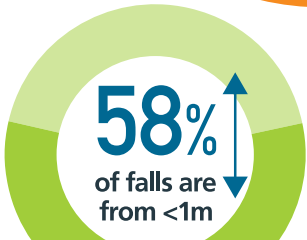
In NSW from 2010–2014



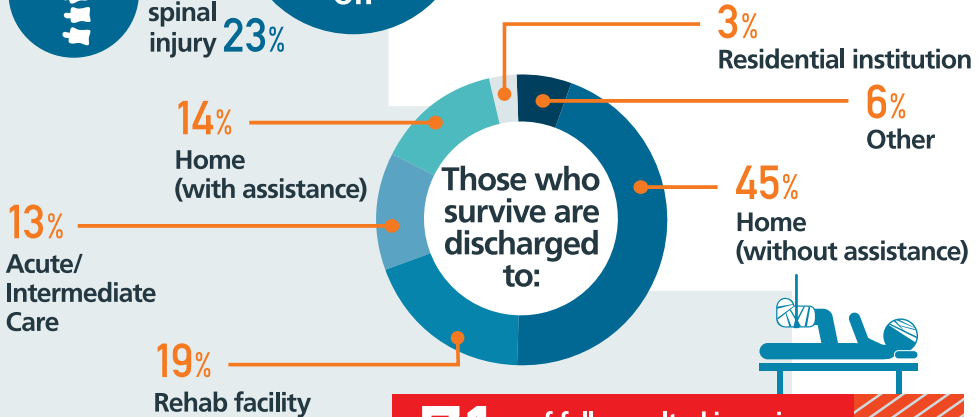
Falls accounted for: **55%** of all major trauma deaths.<sup>1</sup>

**72%** of major trauma in patients aged  $\geq 65$  years.<sup>1</sup>

Trauma teams were not activated in **46%** of falls cases, of which **16%** <sup>1</sup>



Most injuries included one or more of:



**71%** of falls resulted in serious to severe injuries

The NSW Agency for Clinical Innovation (ACI) Institute of Trauma and Injury Management (ITIM), provides state level leadership of trauma care. It does this by:

## CLINICAL SUPPORT AND REVIEW

State level monitoring to assist health care providers and consumers to improve the quality, effectiveness and efficiency of the NSW trauma system.

## DATA COLLECTION AND ANALYSIS

Managing the collection of data about moderately to critically injured people admitted to trauma services in NSW.

## RESEARCH

Continually reduce patient morbidity and mortality together with improving the trauma system, making trauma care more efficient and cost effective.

## EDUCATION

Coordination and support of multidisciplinary trauma education in NSW while creating education packages for trauma specialists in NSW, Australia and around the world.

## HEALTHCARE INNOVATIONS

Developing and managing a range of evidence based healthcare innovations in support of the NSW Trauma system.

Search ACI ITIM or visit [www.aci.health.nsw.gov.au/networks/itim](http://www.aci.health.nsw.gov.au/networks/itim)

<sup>1</sup> Approved access to NSW Trauma Registry, 2010–2014 MDS, NSW ITIM/ACI.

The NSW Institute of Trauma and Injury Management wishes to acknowledge Jenny Miu & Kate Curtis for their previous work on falls in the elderly and the NSW Trauma Services for their contribution of data to the NSW Trauma Registry.

Major trauma defined as all patients of any age, who were admitted to a NSW Trauma Service within 14 days of sustaining an injury, and who:

- Had an Injury Severity Score (ISS) > 12 (moderate to critically injured); or
- Died in hospital (irrespective of ISS) following injury, except those with an isolated fractured neck of femur injury sustained from a fall from a standing height (<1 metre).