



**ACI** NSW Agency  
for Clinical  
Innovation

# ACI Critical Care Forum

8 March 2013

**Dr. Nigel Lyons**  
Chief Executive  
Agency for Clinical Innovation

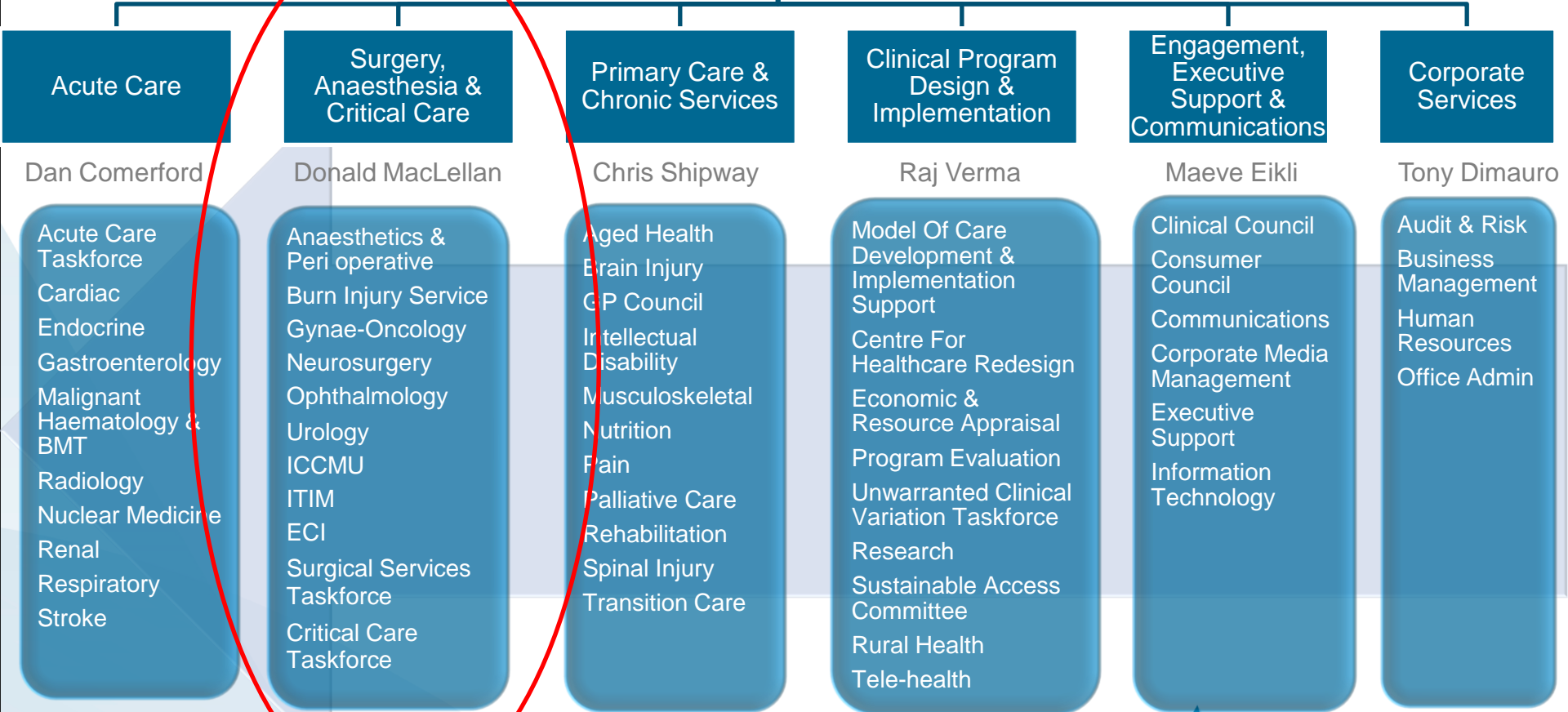
# ACI Networks/Taskforces & Functions

**ACI Chief Executive**

Nigel Lyons

**Clinical Lead**

Tracey Tay



...leading to our vision

..the outcomes of which will exceed the expectations of our partners, patients & community..

..to facilitate quality health care ...

..we will invest in our clinicians, consumers and staff to effectively use our resources..

Aligned with ACI's purpose and values..

**We will be valued as the leader in the health system for designing, evaluating and supporting implementation of innovative models of patient care**

**Our clinicians, patients, health care partners and the community**

- The go to place for clinician and consumer led reform
- Effective partner in implementation
- Better health outcomes for all

**Our processes**

**Effective Partnerships**

- Work in collaboration with partners
- Understand needs, establish and align strategic priorities

**Innovative Health Care**

- Develop a rigorous approach to all aspects of innovation
- Create an environment and capability for innovation

**Operational Excellence**

- Ensure collaboration & alignment of key priorities across the organisation
- Develop high quality systems & processes that are continuously improved

**Our resources**

**Our clinicians, consumers and staff**

- Invest in our people to develop skills & expertise
- Create a vibrant & stimulating environment with a shared direction
- Promote our clinicians, consumers & networks to lead the clinical reform process
- Develop an ACI team with clear roles for our people
- Strengthen involvement & communication

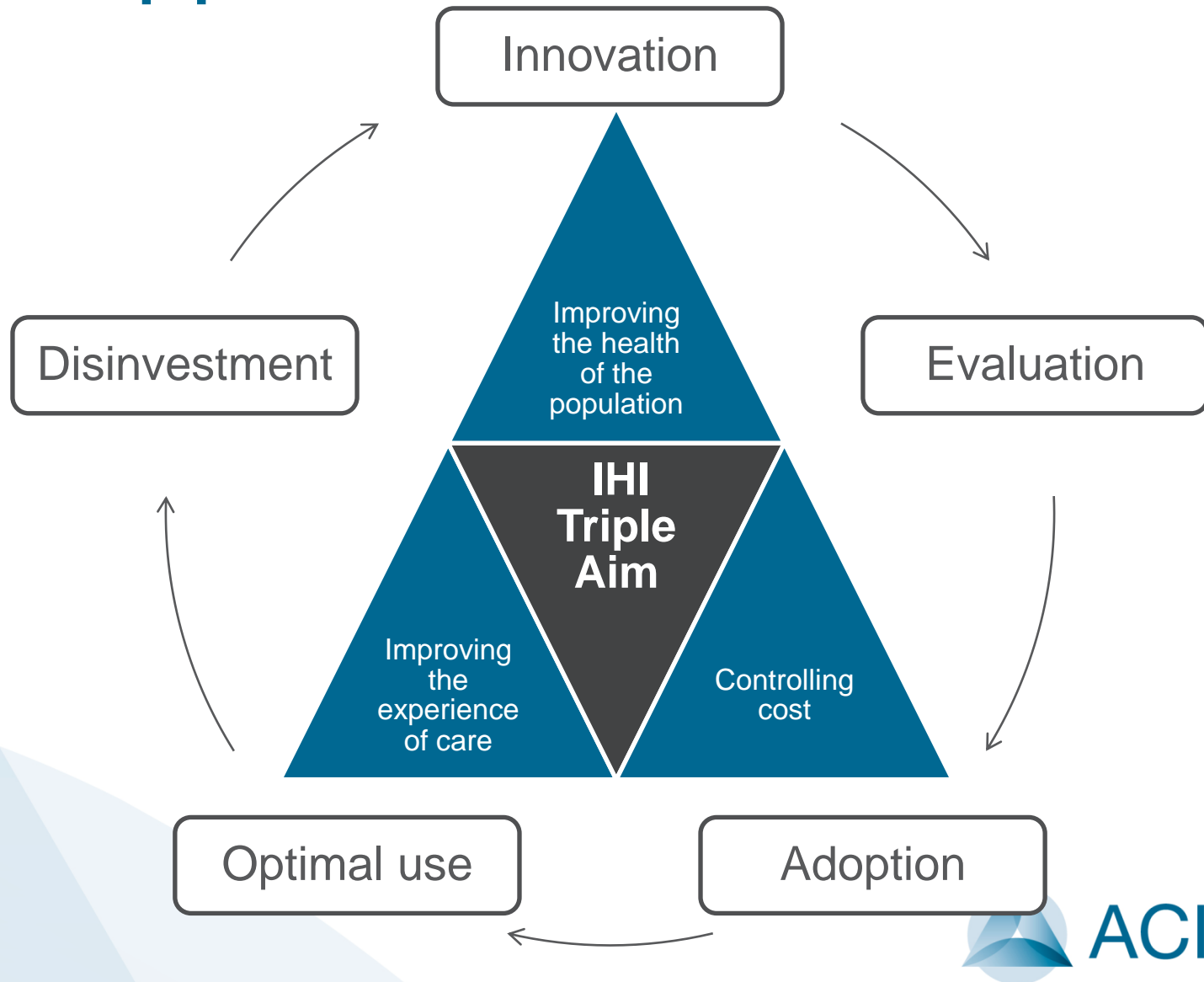
**Our financial stewardship**

- Prioritise and maximise our use of resources

**Purpose:** We will work with clinicians, consumers and partners to design and drive evidence based innovation to ensure appropriate, effective and sustainable patient centred health care

**Core values:** Collaboration      Openness      Respect      Empowerment

# Our Approach



# ACI: Models of Care 2013 – work underway

- Stroke thrombolysis
- Cardiac Reperfusion
- Quality in Acute Stroke Care (QASC)
- Cystic Fibrosis Model of Care
- Tracheostomy Guidelines (Adult)
- Safe Sedation
- Fractured Neck of Femur project
- Pain Management
- Osteoporotic Refracture Prevention
- Palliative Care and End-of-Life Planning for patients with end-stage renal failure
- Health Pathways trial and evaluation
- Diabetes Model of Care
- High risk foot services
- Care of the confused hospitalised older person program
- Integrated healthcare for the complex older person framework
- Rehabilitation Model of Care
- Standards for Care for Gastrostomy feeding tubes
- Pressure Injury Prevention and Management in Children and Adults with Spinal Cord Injury and Spina Bifida

# Critical Care & the ACI

- The ACI now has enhance capacity to support project implementation and evaluation
- Clinician involvement essential – within and across networks
- A whole of systems approach to Critical Care is important
- Critical Care Taskforce maintains access to the Ministry of Health via the ACI
- In identifying initiatives for critical care services, a *united* approach to data collection is imperative to improving patient outcomes
- There is a strong focus in Unwarranted Clinical Variation Taskforce

# Dr Nigel Lyons

## Chief Executive

Email: [nigel.lyons@aci.health.nsw.gov.au](mailto:nigel.lyons@aci.health.nsw.gov.au)



**ACI** NSW Agency  
for Clinical  
Innovation

Level 4, Sage Building  
67 Albert Avenue, Chatswood NSW 2067

PO Box 699  
Chatswood NSW 2057

T + 61 2 9464 4600  
F +61 2 9464 4728

[www.aci.health.nsw.gov.au](http://www.aci.health.nsw.gov.au)  
ABN 89 809 648 636