



ACI NSW Agency
for Clinical
Innovation

Innovations in Aboriginal Chronic Conditions Forum

Kiel Hennessey

**Collaboration.
Innovation.
Better Healthcare.**

ACI



Collaboration. Innovation. Better Healthcare.

The ACI works with clinicians, consumers and managers to design and promote better healthcare for NSW.



ACI Networks

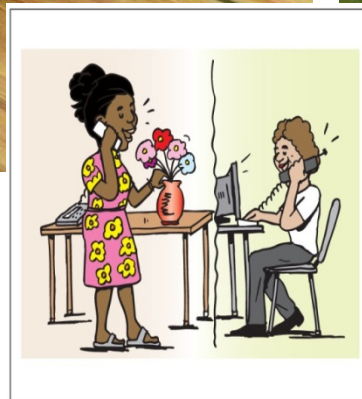
- Networks discuss current issues.
- Design best-practice that is evidence based through practical solutions that can be implemented across NSW.
- Work with local healthcare providers to help healthcare innovation become standard practice across NSW.

CCAP

- Provide a supported framework and practical approach to improving health outcomes for Aboriginal peoples and communities with or at risk of developing a chronic condition.
- Work in partnership to develop and support flexible local approaches in line with ACI's role within NSW Health.



CCAP Initiatives



Innovation



ACI NSW Agency
for Clinical
Innovation

Aboriginal Chronic Conditions Network (ACCN)

- To improve the experience and delivery of healthcare for Aboriginal people with chronic conditions in NSW.
- Work collaboratively to
 - ✓ Implement priorities
 - ✓ Foster relationships
 - ✓ Provide advice
 - ✓ Focus on the strategic directions



Membership

- Membership to the ACCN is open to anyone with an interest or expertise in Aboriginal chronic care in NSW.
- We welcome members from community as well as health and social services, government and non-government organisations and educational institutions.
- <https://www.aci.health.nsw.gov.au/networks/join-a-network>

Level 4, Sage Building
67 Albert Avenue, Chatswood NSW 2067

PO Box 699
Chatswood NSW 2057

T + 61 2 9464 4666
F + 61 2 9464 4728

info@aci.health.nsw.gov.au
www.aci.health.nsw.gov.au

Questions?

Kiel Hennessey
Manager, Chronic Care for Aboriginal People
Agency for Clinical Innovation
02 9464 4686 | Mob: 0427 058 834
kiel.hennessey@health.nsw.gov.au

ACI-CCAP@health.nsw.gov.au

**Collaboration.
Innovation.
Better Healthcare.**