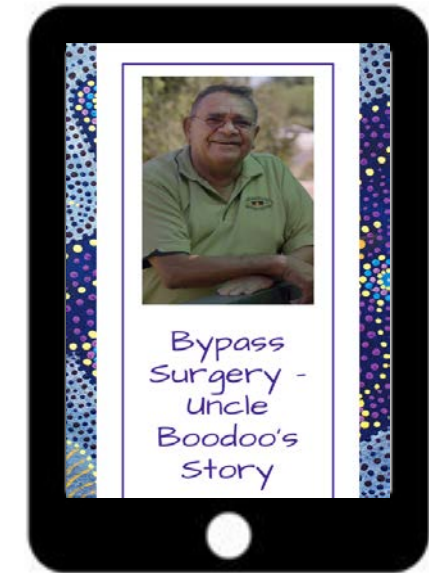
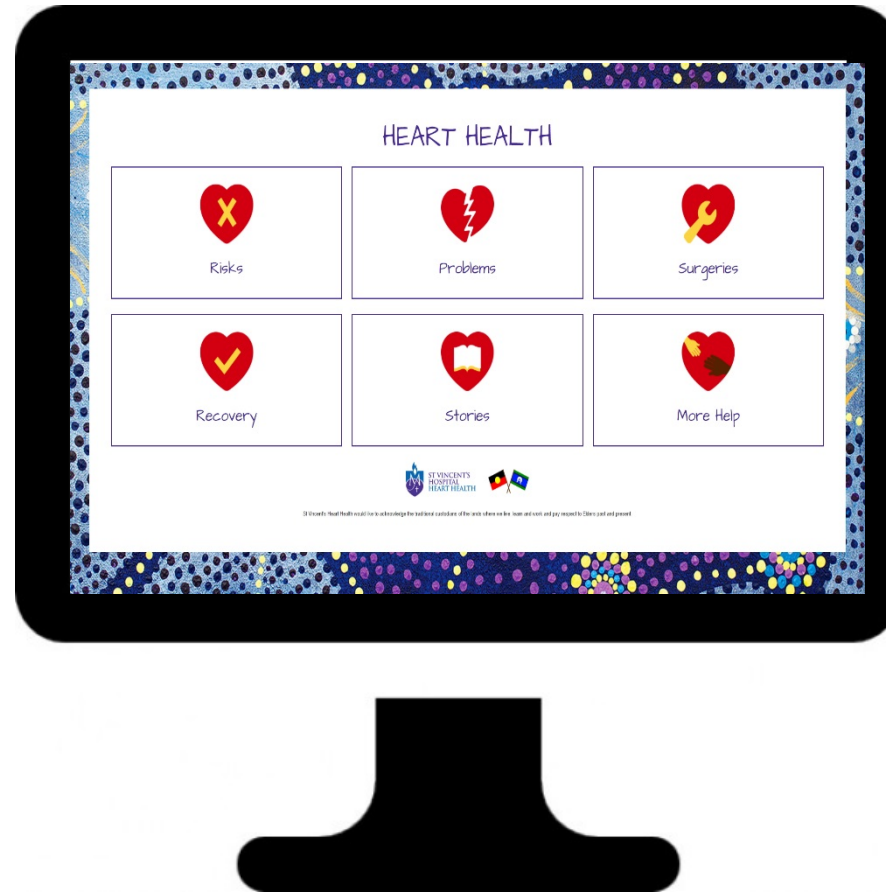


# St Vincent's Heart Health website – a culturally appropriate and accessible web based resource for Aboriginal patients, families and health workers to improve heart health

*T Langley, A/Prof C Holloway , P Deweerd – St Vincent's Hospital Sydney*



<https://svhhearthealth.com.au>

# CARDIOVASCULAR DISEASE

leading cause of death in Aboriginal and Torres Strait Islander people



## HIGHER RATES OF RISK FACTORS



Smoking

Hypertension



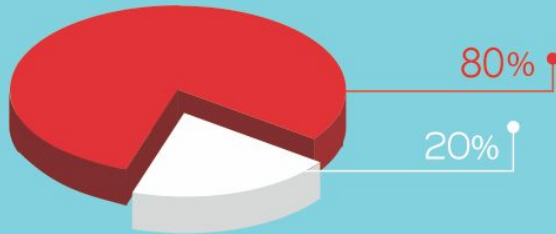
Obesity

Diabetes



<5%  
CR  
participation

3X  
More likely to  
have a heart  
attack



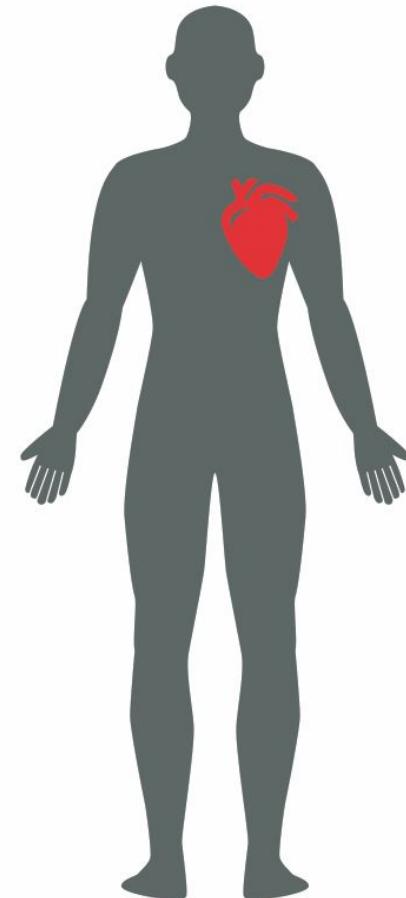
Patients forget 80% of what clinicians tell them



50% of all remembered data is recalled incorrectly



Barriers such as transport difficulties, limited access to culturally appropriate services and inflexible session times.



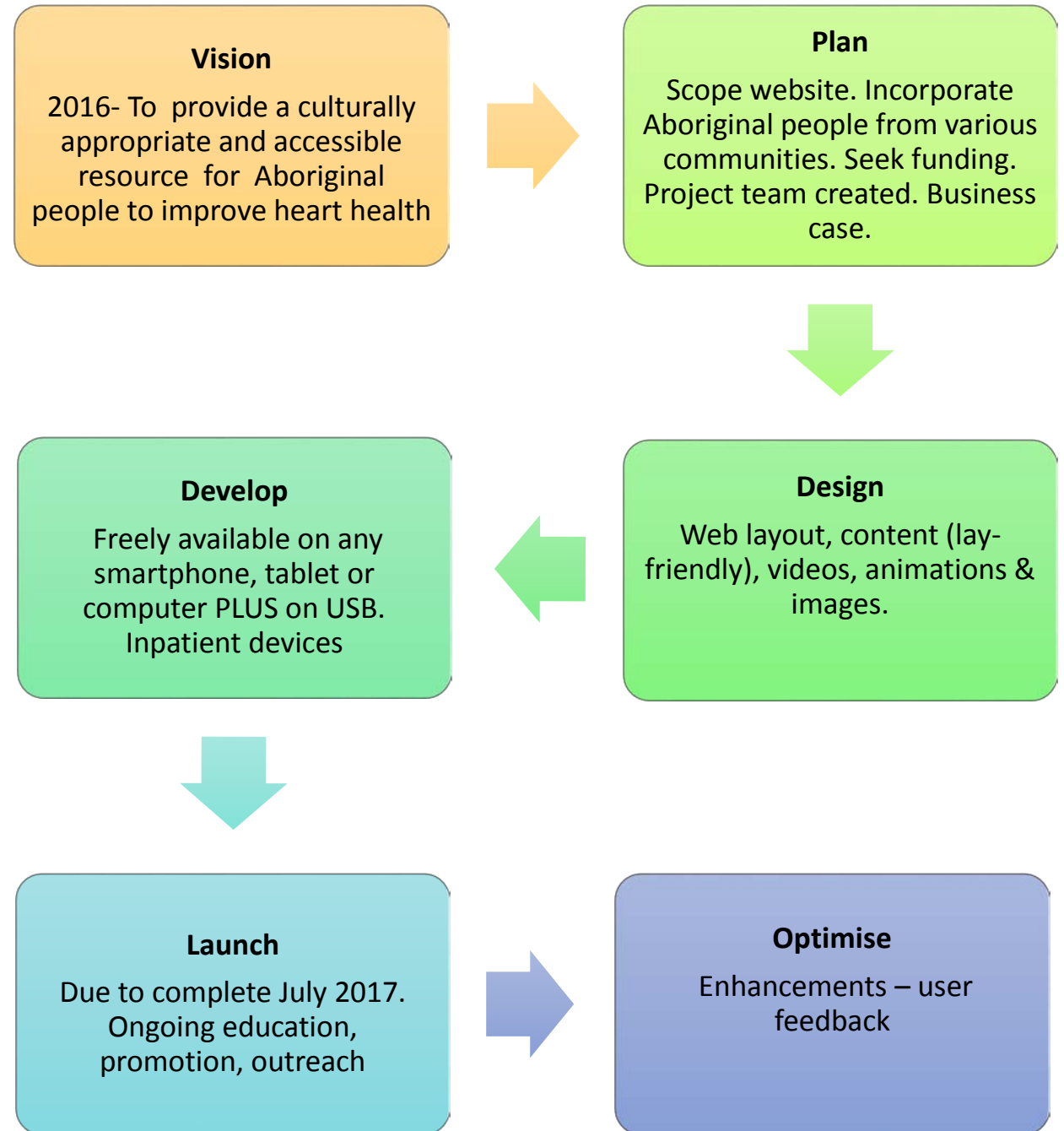


# Aims

The SVHHH website was developed to improve patient outcomes for Aboriginal people by:

- **Reaching out** and engaging with Aboriginal communities - to **define their needs**
- Providing **early access** to information – **available 24/7**
- Offering a **flexible model** for delivering cardiac education
- Enabling **access to cardiac rehabilitation** information

# Planning/Implementation

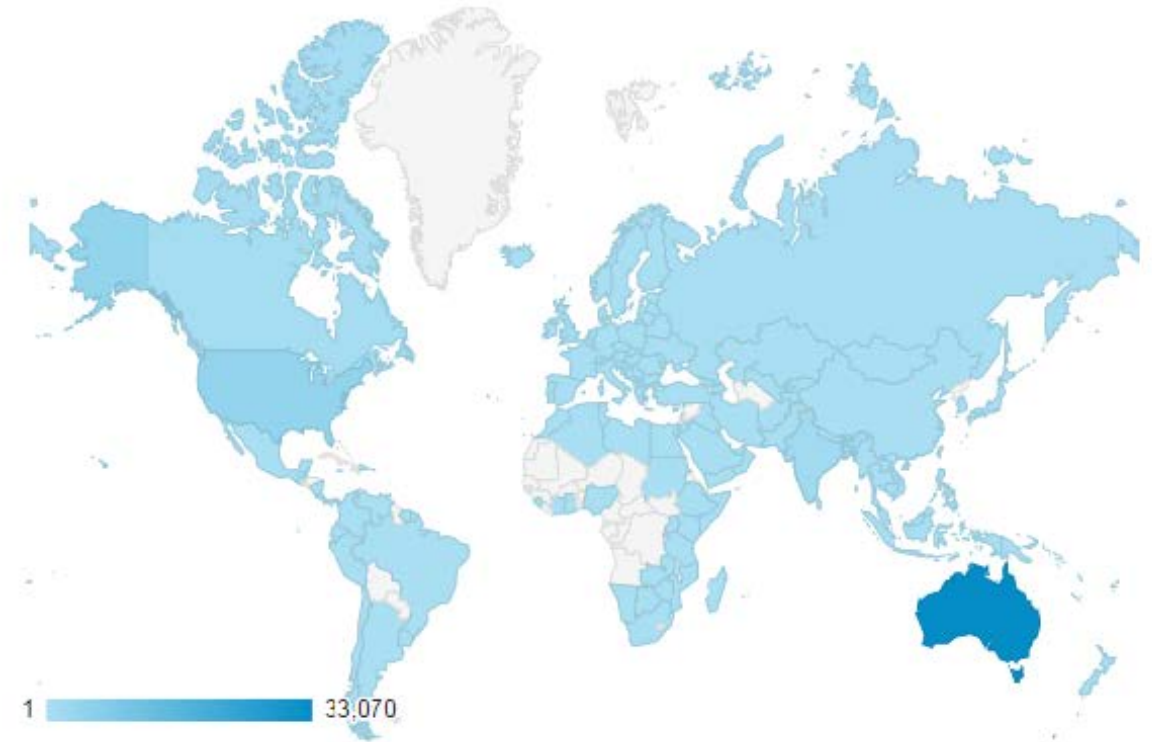


# Outcomes

- Enabling patient and family education prior to hospital admission
- Improving awareness and understanding
- Up-skilling staff

## Feedback survey – 143 users

- **99%** of users believe that the website is useful
- **92%** believe that the information is very easy or extremely easy to understand
- **96%** trust the information a lot or a great deal
- **95%** are extremely likely or very likely to recommend the website to others



Data of SVHHH visits globally Feb 16-May 17

## Analytics (Feb 16-May 17)

- Over 34,000 users continues to grow **globally** (viewed > 96,000 pages)

# Future Directions



- **Optimise** - make enhancements based on user feedback
- **Outreach** – various communities
- **Ongoing research** – measuring effectiveness