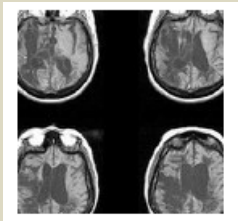


Traumatic Brain Injury - Early Intervention

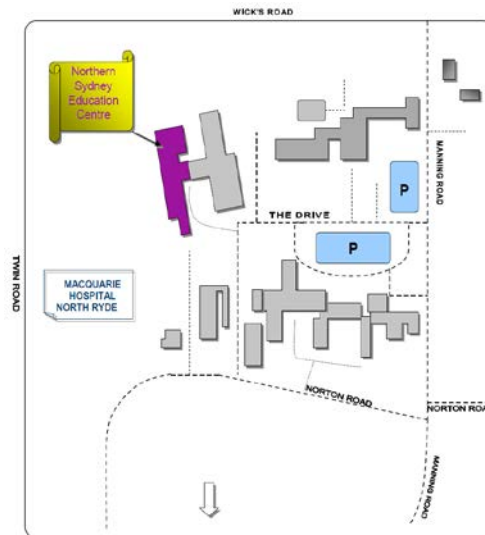
NEUROSURGERY NETWORK
ALLIED HEALTH
PROFESSIONAL DEVELOPMENT
EDUCATION DAY



14th September 2012

Northern Sydney Education Centre

Macquarie Hospital
North Ryde NSW



How to get there:

BUS

From the city take the 288 from the QVB (York Street), alight Cox's Road, near cnr of Wicks Road.

TRAIN AND BUS

Take the Northern Line to Macquarie Park Station. Then take the 506 bus, the bus stop is near the cnr of Waterloo & Lane Cove Roads. Alight near Wicks Road.

CAR

There is free parking on site. See above.

FURTHER INFORMATION

www.131500.com.au/plan-your-trip
Google maps.

Acquired brain injury ... or "ABI", is any damage to the brain that occurs after birth. Causes can be accident, trauma, stroke, infection, alcohol, other drugs or by diseases like Parkinson's disease.

Over 500,000 Australians have an ABI. Three out of every 4 are under 65, as many as 2 out of 3 of these people acquired their brain injury before 25. Three out of every 4 people with ABI are men. (BIA)

Committee

Lyn Farthing
Tracy Kelly
Kirilee Matters
Matthew Sproats
Ruth Swanton
Helen Tassell

PROGRAM

0745 - 0815 REGISTRATION		
TIME	SESSION	PRESENTER
0815 - 0830	Welcome	<i>Tracy Kelly, POWH</i>
0830 - 0915	Overview of Brain Injury and Approaches to Rehabilitation	<i>Dr Joe Gurka, Westmead Hospital</i>
0915 - 0955	Abbreviated Westmead Post Traumatic Amnesia Scale (A-WPTA)	Matthew Sproats Westmead Hospital
0955 - 1010 MORNING TEA		
ASSESSMENT AND MANAGEMENT OF THE BRAIN INJURED PATIENT		
1010 - 1045	Assessment of the Severely Impaired Patient - SMART (Sensory Modality Assessment & Rehabilitation Technique)	<i>Tracy Kelly Helen Tassell, POWH</i>
1045 - 1120	Treatment of the Severely Impaired Sensory Stimulation Program	<i>Audrey McCarry Janine Mullay, Royal Ryde Rehab</i>
1120 - 1200	Management of Spasticity	<i>Dr Clayton King, Royal Ryde Rehab</i>
1200 - 1245	Reality T.V. & challenging behaviour - minimising Pressure Tests & avoiding Elimination	<i>Paul Rodriguez, Westmead Hospital</i>
1245 - 1330 LUNCH		
1330 - 1410	Early Injury Pathway	<i>Marion Fisher, Sydney Children's Hospital</i>
1410 - 1445	Lifetime Care and Support	Rosie Kettlewell
1445 - 1520	Case Management	<i>Dr Kathleen McCarthy, Westmead Hospital</i>
1520 - 1550	Family Support	<i>Jason Hunt, Liverpool Hospital</i>
1550 - 1600	Close and Drinks	<i>Lyn Farthing, ACI</i>

Registration Fees

Before 17.8.12	After 17.8.12
\$60.00	\$80.00

To Register

Go to: aci.health.nsw.gov.au and click on the Events Calendar, Neurosurgery Network.

Payment

Electronic Funds Transfer (EFT)

BSB Number 032001
Account Number 169162
Account Name The Agency for Clinical Innovation

When using EFT include in the reference:

- Your name
- Allied Health Ed Day

Cheque

Please make cheques payable to:
ACI Allied Health Ed Day

Forward to:

Lyn Farthing
Manager Neurosurgery Network
PO Box 699
CHATSWOOD NSW 2057

Cancelation Policy

Cancelation must be in writing. Cancelation prior to 24.8.12 will receive a full refund; following 24.8.12 no refund is available.